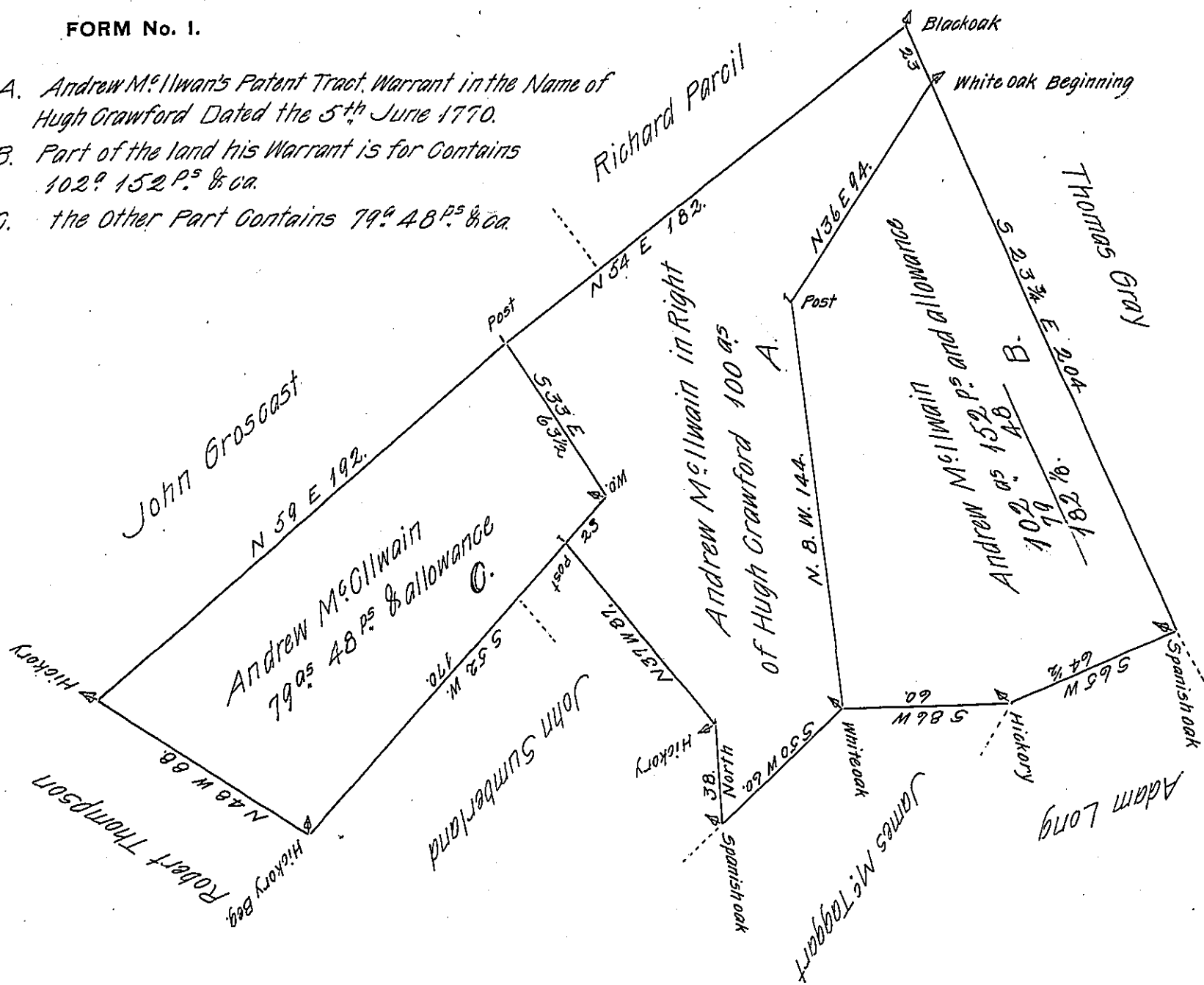


- A. Andrew McIlwain's Patent Tract, Warrant in the Name of Hugh Crawford Dated the 5<sup>th</sup> June 1770.
- B. Part of the land his Warrant is for Contains 102<sup>o</sup> 152 P.<sup>s</sup> & ca.
- C. the Other Part Contains 79<sup>o</sup> 48 P.<sup>s</sup> & ca.



A Draught of <sup>two</sup> Tracts of Land Situate in Berwick Township in the County of York Surveyed the 5<sup>th</sup> day of June 1785 for Andrew McIlwain in Pursuance of a Warrant Dated the 18<sup>th</sup> day of May 1785. The Said two Tracts Viz; B. & C. Containing in the whole one Hundred and Eighty Two Acres & Thirteen Perches and the Usual Allowance of Six Acres P Cent for Roads & ca.

John Forsyth D.S.

John Lukens Esquire  
Surveyor General

IN TESTIMONY that the above is a copy of the original remaining on file in the Department of Internal Affairs of Pennsylvania, made conformably to an Act of Assembly approved the 16th day of February, 1833, I have hereunto set my Hand and caused the Seal of said Department to be affixed at Harrisburg, this second day of November 1905.

*[Signature]*  
Secretary of Internal Affairs.